

# WFC Flyer



Williamson-Sodus Airport, circa 1970 (Courtesy of Wes Somerville)

## Important Dates:

**General Meeting**  
November 10, 2016  
7:00 pm, Clubhouse

**Board Meeting**  
December 1, 2016  
7:00 pm, Clubhouse

**General Meeting**  
December 8, 2016  
7:00 pm, Clubhouse

## NOTAMs

Reminder: The WFC Aircraft Committee will be available for a Q&A session following the November 10 member meeting. Please join in the discussion about the future of our fleet.

The East gate into the airport is now closed for the season.

## Williamson Flying Club

November 2016

### Activities Committee Update by Chris Houston



WFC visits the Glenn Curtiss Museum, March 2016

2016 was a challenging year for fly-out activities. Although we made a wildly successful flying trip to Cleveland's Burke Lakefront Airport in June, weather forced us to cancel many of our planned

flying trips, including the much anticipated fall fly-out to Lake Placid. As November brings shorter days and progressively less reliable weather, we will be more opportunistic with our flying plans: if the

weather presents an opportunity for a weekend fly-out, we'll put out the call.

In the meantime, your Activities Committee is

*(Continued on page 2)*

## Williamson Flying Club

Williamson-Sodus Airport (KSDC)  
5502 State Route 104  
Williamson, NY 14589

Find us on the web at:  
[www.williamsonflyingclub.com](http://www.williamsonflyingclub.com)

## Board of Directors

President: Steve Murry ([president@williamsonflyingclub.com](mailto:president@williamsonflyingclub.com))  
Vice President: Tom Henderson ([vice-president@williamsonflyingclub.com](mailto:vice-president@williamsonflyingclub.com))  
Treasurer: Bob Herloski ([treasurer@williamsonflyingclub.com](mailto:treasurer@williamsonflyingclub.com))  
Secretary: Joe Ebert ([secretary@williamsonflyingclub.com](mailto:secretary@williamsonflyingclub.com))  
Director: Dick Swingly ([director-2014@williamsonflyingclub.com](mailto:director-2014@williamsonflyingclub.com))  
Director: John Clingerman ([director-2015@williamsonflyingclub.com](mailto:director-2015@williamsonflyingclub.com))  
Director: Randy Christian ([director-2016@williamsonflyingclub.com](mailto:director-2016@williamsonflyingclub.com))

**Medical Advisor:** Dr. Pam Tarkington ([pamela1@choiceonemail.com](mailto:pamela1@choiceonemail.com))

*Please RSVP for  
the turkey luncheon  
and holiday party  
using the WFC  
Event Calendar*

#### Aviation Quote:

Once you have learned to fly your plane, it is far less fatiguing to fly than it is to drive a car. You don't have to watch every second for cats, dogs, children, lights, road signs, ladies with baby carriages and citizens who drive out in the middle of the block against the lights... . Nobody who has not been up in the sky on a glorious morning can possibly imagine the way a pilot feels in free heaven.

*William T. Piper  
President  
Piper Aircraft Corp.*

## Activities Committee Update by Chris Houston

*(Continued from page 1)*  
changing focus toward indoor activities.

### Upcoming Activities

#### Turkey Luncheon

Saturday, Nov 19 *(please note that this date is a change from what was published in the October newsletter)*

Noon—1:00

Please join us in the WFC clubhouse for a Thanksgiving feast! Tony Alesci will be deep frying two turkeys and Kathy Alesci will be making mashed potatoes and green bean casserole. As an added bonus, Corrine Robideau is making her signature

stuffing!

RSVP via the WFC Event Calendar.

#### Holiday Party

Saturday, Dec 3

6:00 pm—9:00 pm

This year's holiday party will take place at Carey Lake's banquet room, 959 Walworth Penfield Road, Macedon, NY 14502.

Traditional raffle items will be provided by attendees.

The schedule includes:

6-7 pm: Cocktails

7-8 pm: Dinner & raffle

8-9 pm: Howie Hypnotize (a comedic hypnotist)

The cost is \$30/person.

**Please RSVP for the holiday party by November 28th using the WFC event calendar**—we will use this information to provide a headcount to Carey Lake and to generate a list of names to invoice.

If there are any questions about the holiday party, please contact John Clingerman or Tammy Bebernitz.

## Flight Rx by Dr. Pam Tarkington

BARO (AERO) Sinusitis

This is caused by a change in ambient pressure.

Problems with divers go back several thousand years but caisson disease was first described by Bert in 1878 in those who worked below sea level building bridges and then returned to the surface.

In aviators, it became known during WWII.

The sinuses are literally

holes in our head with a small opening that drains into the oropharynx.

Barotrauma occurs when the body ascends or descends, causing air to become trapped and resulting in a defect in equilibration and ventilation. The resulting pressure difference between ambient air and the air in the sinuses causes an obstruction to drainage. A sinus obstruction can be caused by a deviated septum, allergies, infection, inflammation, foreign body, abuse of drugs such

as Afrin, tumors, or polyps, etc.

Symptoms of baro sinusitis include pain in the face, nose, eyes, jaw or teeth, nasal congestion, disturbed vision and nose-bleed. It should be noted that this usually occurs in the frontal sinuses (located above the eyebrows); the next common sinus to be affected is the maxillary sinuses (located in the cheek area).

Treatment is directed at

*(Continued on page 4)*

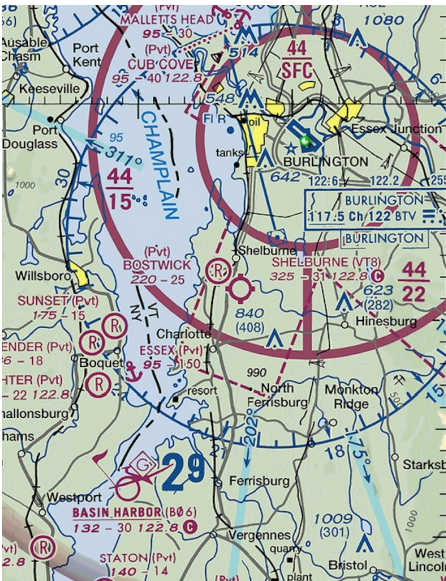
## Cool Places To Fly by Chris Houston

**Destination:** Basin Harbor Airport (B06), Vergennes, VT

**Distance:** 173 nautical miles, direct

### Why It's Cool:

The Basin Harbor Club is a resort on the eastern shore of Lake Champlain. Adjacent to the Club's golf course is a 3,000' by 90' turf runway (02-20) in excellent condition. Not only is the turf runway smooth, it was very well groomed. Aircraft parking on the north end of the runway is next to the [Red Mill](#), a wonderful restaurant in a renovated (though still rustic) 1940s era saw mill. These factors all combine to make Basin Harbor a very popular \$100 hamburger destination in the northeast.



My daughter and I visited on October 15 of this year, which was the last weekend that the Red Mill was open for the season. Because insulation would have broken with the rustic authenticity of the place, the Red Mill has none. As a result, it closes mid-October and reopens mid-May each year.

Basin Harbor was hopping when we visited this fall. By the time we departed, there were ten aircraft parked in front of the restaurant that ranged from an Ercoupe to a smattering of Cessnas (a 120, two 150s, a couple of 172s, and a 177) to a V-tailed Bonanza.

My daughter would find this review lacking if I did not mention the wonderful playground located immediately adjunct to aircraft parking. This was a great diversion for her.

As for the food at the Red Mill, it was outstanding. I chose the Maryland Crab Cake BLT and my daughter, as a world expert in chicken fingers, stayed true to form. We were both satisfied. While exploring, we noticed that the Lake Champlain Maritime Museum was nearby, but we did not have the time to investigate. Something tells me that we'll be back.

### Tips:

- There is no fuel available at Basin Harbor Airport.
- Those hoping to fly WFC aircraft to Basin Harbor will require 150 hours and a grass checkout with a club instructor.
- Basin Harbor Airport is located approximately 19 nautical miles south-southwest of Burlington, VT. It is on the opposite shore of Lake Champlain from a distinctive hook along the shoreline near Westport, NY. The runway is directly east of the golf course. Note that a displaced threshold is marked on the ground for runway 20.
- The Red Mill and the airport are open from mid-May to mid-October each year.



Runway 02-20 at Basin Harbor Airport



Looking toward the approach end of 20



The Red Mill





## Recommended Reading

The latest issue of *FAA Safety Briefing* (November / December 2016) focuses on common questions to the FAA from the public and how to best interact with the Agency  
[www.faa.gov/news/](http://www.faa.gov/news/)

## Upcoming Events

19 November 2016

WFC luncheon, noon, WFC clubhouse.

Note: date has changed from what was published last month.

Planned menu will feature Tony Alesci's famous deep-fried turkey, Kathy Alesci's green bean casserole and mashed potatoes, and Corrine Robideau's stuffing!

RSVP via club event calendar

03 December 2016

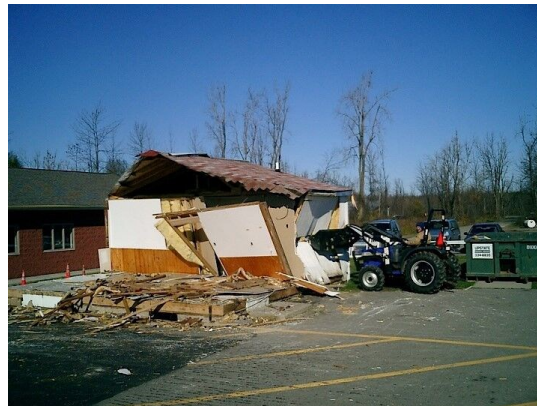
WFC Christmas Banquet  
 Carey Lake Banquet Room

6:00—9:00 pm

\$30/person, includes dinner and entertainment

RSVP via club event calendar by November 28

## A Look Back: In Celebration of Sixty Years



Circa 2003, the WFC outgrew its previous clubhouse and built the existing building. The two structures coexisted for a brief time before the elder clubhouse met its fate.

*Photos courtesy of Wes Somerville*

## Flight Rx by Dr. Pam Tarkington



*(Continued from page 2)*  
 releasing the entrapped air. If it occurs during flight, go back to the altitude where the pain was first noted and then descend as slowly as possi-

ble to avoid pain. If the symptoms present after landing, antihistamines, decongestants and even steroids may be helpful. If there is an anatomical problem (e.g., polyps),

surgery may be required before the pilot can safely continue flying.

As an aside, this problem also occurs in those who work in submarines.